

DxDataBook enables intelligent part selection.

Major product benefits:

- Provides a quick way to search and select components from any standard parts database
- Enables geographically dispersed design teams to access corporate component information via Web or intranet
- Ensures optimal parts are selected
- Reduces number of parts and cost for overall product
- Easily integrates with corporate component and MRP databases, or with Mentor's DMS
- Eliminates redundancy by using generic graphical representation for similar parts

Overview

For the electronic engineer developing a product, the ability to manage and quickly access corporate component information is critical to success. But geographically dispersed design teams often use separate component databases, which may be out of sync or out of date. This can cause mistakes during product development that go undetected until later in the design cycle, causing costly redesigns or quality problems. Component information can come from a variety of sources including corporate parts databases, manufacturers' data books and design systems. When adding component information to the design, outdated and missing data can affect design integrity and manufacturability. A more reliable solution is to have all the latest information accessible to all designers throughout the enterprise.

Mentor Graphics® DxDataBook™ allows the designer to search all these sources directly. This component search-and-selection tool allows design engineers to quickly search for and locate parts over a corporate intranet or the Internet.

Simplified Library Management

Managing EDA libraries can be complex because each component requires a unique representation. This causes a large amount of duplication for each part. For example, the symbol for a "Resistor" may be duplicated thousands of times to represent all of the various values and electrical parameters that are needed. This is not only inefficient, but changing one symbol often requires that all parts of the same type be updated. It also may be difficult to find the part since the symbol name has to reflect its unique characteristics. DxDataBook allows one graphical symbol to exist for all similar parts, and then characterizes the part with information from a database when that part is added to the schematic. DxDataBook provides access to all component information without data redundancy, multiple libraries, or time-consuming tool overhead.

Accessing Library Data

DxDataBook was designed with ODBC (Open Database Connectivity), an industry-standard DBMS format. DxDataBook can access data in virtually any database format including text, spreadsheets, Microsoft Access, Oracle, SQL Server, and other commercially available RDBMS. DxDataBook can also connect to Mentor's DMS™ (Data Management System). DMS is a complete library and design data management tool that contains detailed information about all the parts in the corporate library. DxDataBook can search the part information in DMS and display parts that are candidates for use in the design. DMS also provides access to datasheets, detailed physical layout data, and information about which other designs use a particular component.

Typical Product Usage

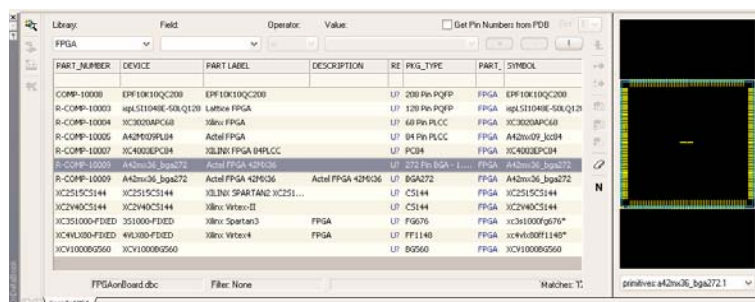
The designer can use DxDataBook in several ways. To find a unique component, the designer enters search criteria (e.g., an 8-bit register) and DxDataBook displays all the available parts that meet the specified criteria. The user narrows the search by entering other parameters (e.g., tri-state output) to invoke searches based on the selections. After each search, the system shows the number of candidates that meet the specified criteria. To review and select a part, users can display all the candidates and their attributes in a spreadsheet. The component data in the spreadsheet can be linked to any viewing program, so documents or other design data can be viewed or

downloaded by clicking on a hyperlink in the spreadsheet. Links can also be established between DxDataBook data and web-based component information. Using DxDataBook, the user can instantiate the desired component right onto the schematic.

The designer can also add a generic component to a schematic. For example, an engineer may want to postpone selecting a part from a particular component manufacturer until later in the design process. When it is time to select the manufacturer, the designer can select the component and DxDataBook automatically displays the available manufacturers and their respective status from production control. The decision can be based on such criteria as lead time, price, or inventory level. Once the selection is made, the component's unique attributes can be annotated to the generic component in the schematic.

DxDataBook can be used to verify the integrity of the entire design, ensuring that the information on the schematic is consistent with the corporate database. It can also advise the user which parts of the design have not been uniquely identified, and then automatically annotate any missing attribute information.

DxDataBook can also access design reuse blocks that have been stored in the corporate library. It can be used to search for a specific reuse block, or for reuse blocks that meet a set of search criteria. This makes it easy to find the right reusable design for incorporation in a new schematic.



Searches can be based on multiple parameters and a symbol preview of the selected part is displayed.

Visit our website at www.mentor.com

Copyright © 2005 Mentor Graphics Corporation. Mentor Graphics is a registered trademarks and DxDataBook and DMS are Trademarks of Mentor Graphics Corporation. All other trademarks mentioned in this document are trademarks of their respective owners.

Corporate Headquarters
Mentor Graphics Corporation
8005 SW Boeckman Road
Wilsonville, OR 97070-7777
Phone: 503.685.7000
Fax: 503.685.1204

Sales and Product Information
Phone: 800.547.3000

Silicon Valley
Mentor Graphics Corporation
1001 Ridder Park Drive
San Jose, California 95131 USA
Phone: 408.436.1500
Fax: 408.436.1501

North American Support Center
Phone: 800.547.4303

Europe
Mentor Graphics
Deutschland GmbH
Arnulfstrasse 201
80634 Munich
Germany
Phone: +49.89.57096.0
Fax: +49.89.57096.40

Pacific Rim
Mentor Graphics (Taiwan)
Room 1603, 16F
International Trade Building
No. 333, Section 1, Keelung Road
Taipei, Taiwan, ROC
Phone: 886.2.87252000
Fax: 886.2.27576027

Japan
Mentor Graphics Japan Co., Ltd.
Gotenyama Hills
7-35, Kita-Shinagawa 4-chome
Shinagawa-Ku, Tokyo 140
Japan
Phone: 81.3.5488.3033
Fax: 81.3.5488.3021

Mentor Graphics

Printed on Recycled Paper

11-05-JC

1024340-w