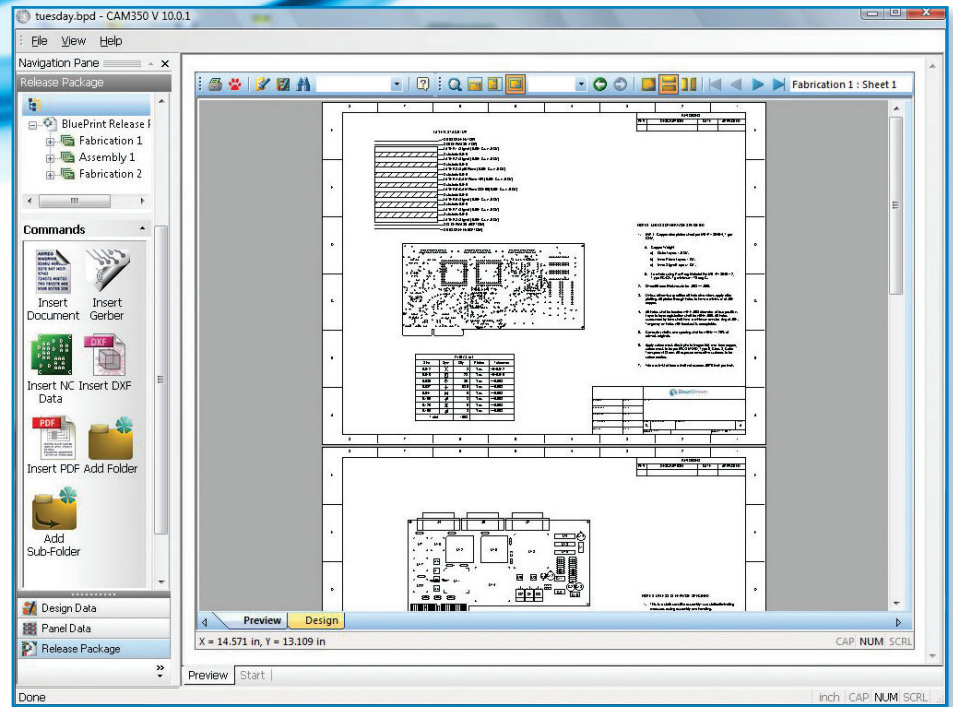


Release Package Navigator:

Using the Release Package Navigator you can store, distribute, and view all the necessary data required to fabricate and assemble a PCB anywhere, anytime.



The Release Package Navigator found in CAM350 allows you to work from one single electronic file to store and distribute all the deliverables for manufacturing. For example, this one file can contain your BluePrint documents, Gerber, NC Drill/Mill, Panel Arrays, ODB++, PDF, DXF, PCB CAD, MS Office and virtually any file located on your computer and/or network.

If you also have BluePrint-PCB, then you can access these files directly from the Release Package within BluePrint as well, and add them to your documentation. The Release Package Navigator also supports the importation of Gerber, and Drill and Mill data from other CAM systems.

Using the Release Package Navigator you can store, distribute, and view all the necessary data required to fabricate and assemble a PCB anywhere, anytime. Manufacturers simply receive your release package, download the free DownStream viewer, and extract the necessary information they need to build your boards.

With the new compatibility found in CAM350 10.0 and BluePrint-PCB 2.0, you now have the power and ease to control all our PCB Post Processing requirements with one integrated solution.

The Release Package Navigator is found within both CAM350 and BluePrint. You can use this feature in CAM350 without owning BluePrint, but you do have to install BluePrint to use it successfully and to its fullest potential for PCB Post Processing success.